

### INSTALLATION INSTRUCTIONS

- 1- TEMPORARILY ATTACH BRACKETS TO THE BACKSIDE OF THE DEFLECTOR WITH HARDWARE AS ILLUSTRATED.
- 2- SLIP ON CHROMED TRIM EDGE TO BOTTOM EDGE OF THE HOOD DEFLECTOR AND CUT OFF EXCESS.
- 3- POSITION THE DEFLECTOR ON HOOD. BE SURE THAT THE BOTTOM EDGE OF THE DEFLECTOR IS FLUSH TO THE EDGE OF THE GRILL. **NOTE 3**
- 4- MARK BRACKET HOLES ON HOOD.

**ATTENTION**

**DO NOT MARK SIDE HOLES, IT WILL BE DONE IN A FURTHER STEP.**

**CAUTION**

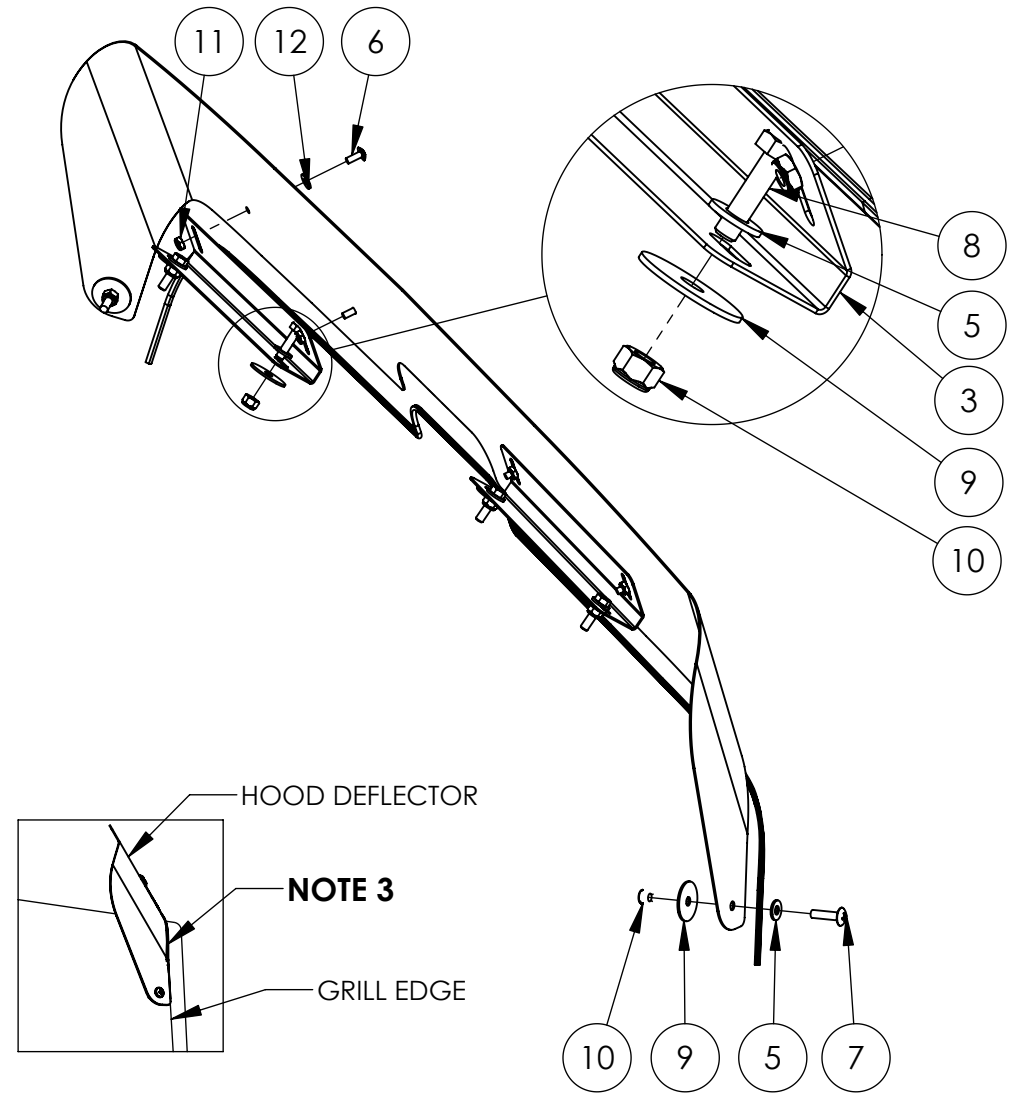
**REMOVE THE HOOD DEFLECTOR TO PREVENT DAMAGE**

- 5- DRILL HOLES AS MARKED AT 9/32" (.28125") DIA.
- 6- TEMPORARILY INSTALL THE DEFLECTOR AS ILLUSTRATED.
- 7- PRESS SIDE OF THE DEFLECTOR ONTO THE HOOD AND MARK HOLES.

**CAUTION**

**REMOVE THE HOOD DEFLECTOR TO PREVENT DAMAGE**

- 8- DRILL SIDE HOLES AT 9/32" (.28125") DIA.
- 9- INSTALL THE DEFLECTOR WITH HARDWARE AS ILLUSTRATED.
- 10- TIGHTEN ALL SCREWS AND BOLTS.



ITEM NO.	PART NO.	DESCRIPTION	QTY
1	CL7121006-C00	DÉFLECTEUR DE CAPOT	1
2	K7121006BH	HARDWARE KIT INCLUDE:	-
3	-	PR54DEG	2
4	-	ES28-215-P80	1
5	B-W14S	FLAT WASHER 1/4"	6
6	-	TRUSS PHILIPS #10-32NFX1/2" SS	4
7	-	TRUSS PHILIPS 1/4-20NC X 1	2
8	-	HEX. BOLT 1/4NC X 1	4
9	B-FW14OD114Z	FENDER WASHER 1/4"OD1 1/4"Z	6
10	B-NL14-20S	NYLON LOCK NUT, 1/4-20 UNC	6
11	B-NL10-32S	NYLON LOCK NUT #10-32NF SS	4
12	B-W10OD12S	FLAT WASHER ID#10 X OD 1/2" SS	4

<b>TRUX ACCESSORIES</b>			
TITLE: HOOD DEFLECTOR PETERBILT 335			
SIZE	DWG. NO.		
<b>ATHOD-PET335</b>			
NAME	DATE	REV	DATE
DRAWN BY P.W.	23-11-2006	PH1	-
SCALE: 1:8		WEIGHT: LBS	SHEET: 1 OF 1